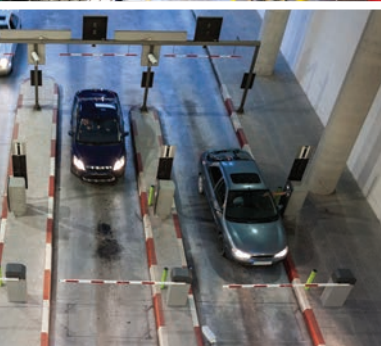
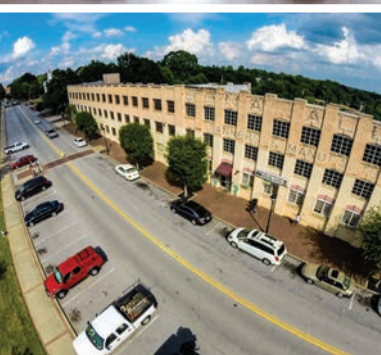


**BECOME THE
ULTIMATE
MANAGER
SEE EVERYTHING
ALL AT ONCE**



**BOOST
WORKPLACE
EFFICIENCY
ACHIEVE MORE
USING LESS**



CUT INEFFICIENCY & MOBILISE MANAGEMENT

ACHIEVE MORE THAN SECURITY WITH CCTV



You can't run a business without a CCTV system.

Adopt surveillance technologies used by leading businesses to cut inefficiency, protect your interests and re-energise your team.

CCTV surveillance can help you improve security, but it can also:

- Fix or optimise operational processes in shipping or production
- Improve awareness of other staff and decrease delay in communications
- Prevent WHS issues & accidents
- Identify a negative work environment, stop harassment & abusive behaviour
- Remove inefficient work practices such as over or under allocation of staff

**Wasted time
at work cost
Australian
businesses
\$41.6 billion.**

Ernst & Young Australia Productivity Pulse (2012)

BOOST ENERGY SAVINGS & TEAM PRODUCTIVITY

CREATE MORE USING LESS WITH LED LIGHTING



Energy efficiency delivers more than cost savings.

Updating to the latest in LED lighting and energy saving devices boosts productivity, security & improves total business efficiency.

Quality of artificial lighting is one of the most important influences on performance in the workplace.

Carbon Trust Lighting Overview Guide (2017)

Improved lighting can help you save on costs, but it can also:

- Enhance quality of environment, increasing employee productivity and decreasing absenteeism
- Improve task efficiency whilst reducing operational errors & accidents
- Boost security and safety for both employees and customers
- Reduce maintenance time, minimising delays in production



Crucial evidence. Always.™

GET BACK IN THE DRIVER'S SEAT

WITH VIP VISION™ CCTV, THE ESSENTIAL MANAGEMENT TOOL



VIP Vision™ desktop & mobile remote view surveillance software for workplace management.

Revolutionise the way you manage with VIP Vision™

VIP Vision™ is the premier IP surveillance solution for enterprise and commercial applications, delivering powerful, scalable IP CCTV systems.

With an emphasis on functionality, ease of use and ease of installation across the range, VIP Vision™ surveillance solutions include:

- A wide range of small business to enterprise systems for up to & beyond 128 cameras
- Ultra HD resolution, high capacity surveillance systems for months of footage storage
- Vast range of surveillance cameras for general purpose surveillance, marine grade applications, thermal detection & more
- Assortment of accompanying accessories including professional networking gear



THE ESSENTIAL MANAGEMENT TOOL

SEE HOW YOU CAN ACHIEVE MORE THAN SECURITY WITH VIP VISION™ CCTV

Go beyond the basic workplace setup. Monitor every aspect of your operation live beside your work display.

REAL TIME CUSTOMER SERVICE



Address customer queries or complaints promptly, improve allocation of staff and deliver a higher quality of service.

RAPID OPERATIONS RESPONSE

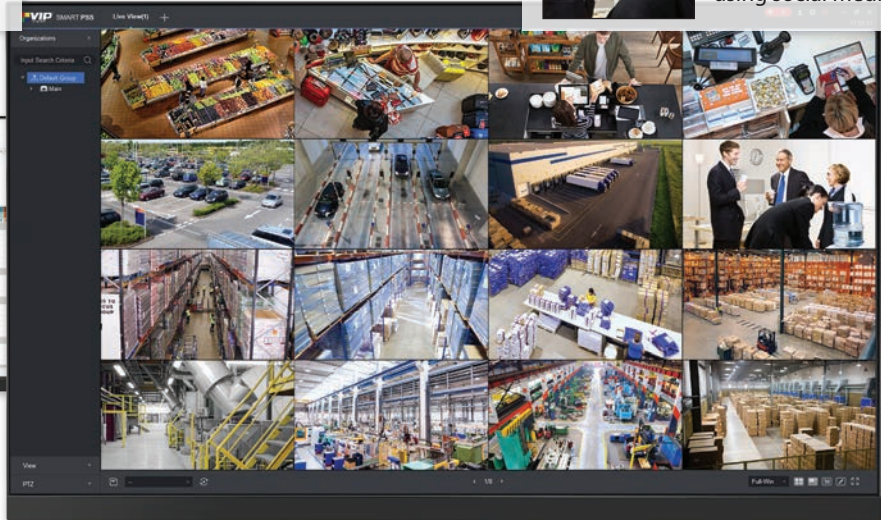
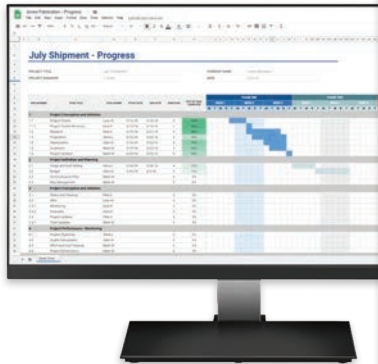


Monitor production & shipment progress, confirm completion of tasks and swiftly react to any changes.

CUT UNPRODUCTIVE ACTIVITY



Identify and remove time wasting activities such as socialising, excessive personal phone calls and using social media.

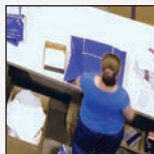


IMPROVE TIME MANAGEMENT



Better manage staff punctuality, remove duplication of effort & identify inefficient rostering/scheduling.

STAMP OUT HARASSMENT



Protect yourself & staff against physical and verbal abuse, bullying, psychological and sexual harassment.

PROTECT YOUR STAFF & BUSINESS



Ensure that workplace health & safety practices are adhered to and that you are protected in the event of an incident.

CCTV MANAGEMENT CONTROL

Tailor your CCTV management experience with easy drag & drop control, eMap site CCTV overlay and comprehensive playback functionality.



EASILY MONITOR ENTIRE AREAS

Overview and manage work floors, store fronts, or office spaces with camera using VIP Vision™ 360° and 180° Panoramic & Fisheye Series cameras.



CHANGE MORE THAN YOUR POWER BILL

WITH ENSA™ LED LIGHTING AND ENERGY SAVING DEVICES

Boost your business' efficiency with ENSA™

ENSA™ LED lighting and energy saving devices comprises professional energy efficiency solutions, designed for fast installation, power consumption reduction & improved lighting performance.

The range incorporates the latest in LED technology to offer high efficiency, light quality & long service life.

- Industrial grade high bays, floods & canopy lights ideal for manufacturing & production, warehousing, petrol stations & more
- Downlights, batten lights, panel lights and retrofit tubes/bulbs for office fit-outs and commercial applications
- Intelligent management systems & energy saving devices to optimise lighting use



LED LIGHTING BOOSTS PRODUCTIVITY

SEE HOW ENSA™ LED LIGHTING CAN IMPROVE YOUR BUSINESS' PERFORMANCE

Update to LED lighting to create an energy efficient work environment that staff are happy to work in.



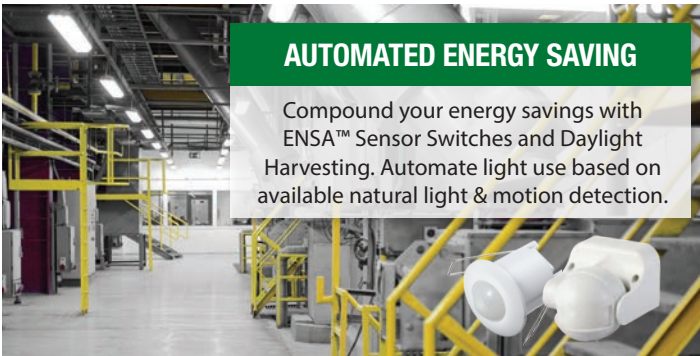
COMFORT EQUALS PERFORMANCE

ENSA™ low glare (UGR<19) LED lighting creates comfortable, well-lit working environments, reducing staff errors and improving work rate.



IMPROVE SAFETY & EFFICIENCY

The ENSA™ range delivers superb light output of up to 130lm/W, enabling work to be performed faster, with greater confidence and safety.



AUTOMATED ENERGY SAVING

Compound your energy savings with ENSA™ Sensor Switches and Daylight Harvesting. Automate light use based on available natural light & motion detection.



REDUCE STAFF FATIGUE

Reduce staff discomfort & improve task performance with high colour accuracy, no-flicker ENSA™ LED lighting available in a wide range of colour temperatures.

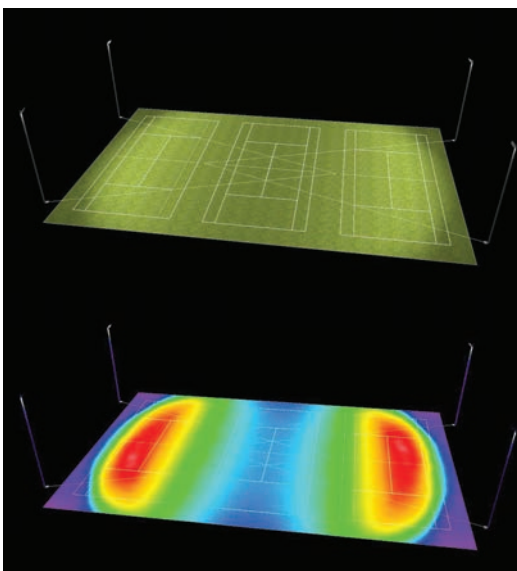
MINIMISE YOUR LIGHTING UPGRADE COST



Subsidise your lighting upgrade using the ENSA™ IPART Accepted range, available through the NSW Energy Saving Scheme. In LED panel, batten, high bay, canopy and flood lighting.



ENSA™ high power floods lighting a tennis court in Yaninee, South Australia.



CONFIDENCE START TO FINISH

Assurance from simulation to installation. Ensure an exceptional lighting result with free lighting simulations using any product in the ENSA LED lighting range.

Revolutionise the way you manage with VIP Vision™



At VIP Vision™, we believe that you can achieve more than security with surveillance. We believe that CCTV is an essential business management tool.

With multiple implementation success stories in surveillance for public, defence, retail and transport sectors, the VIP Vision™ range is well positioned to help secure your business and re-energise your management system.

We have a network of VIP Vision™ dealers Australia-wide, well versed in small to large surveillance applications.

To find your local VIP Vision™ professional:

CALL: 02 4502 8671

VISIT: WWW.VIP-VISION.COM



Boost your total business efficiency with ENSA™

ENSA™

ENSA™ is committed to delivering energy savings and improved business efficiency through our professional LED lighting and energy saving devices.

ENSA™ products have been implemented with great success across a multitude of sectors including production & servicing facilities, council facilities, large carparks, halls, recreational centres and more.

Find out how ENSA™ can help maximise your business' total efficiency by contacting your local ENSA™ dealer.

To find your local ENSA™ professional:

CALL: 02 4502 8647

VISIT: WWW.ENSA.LIFE.COM

